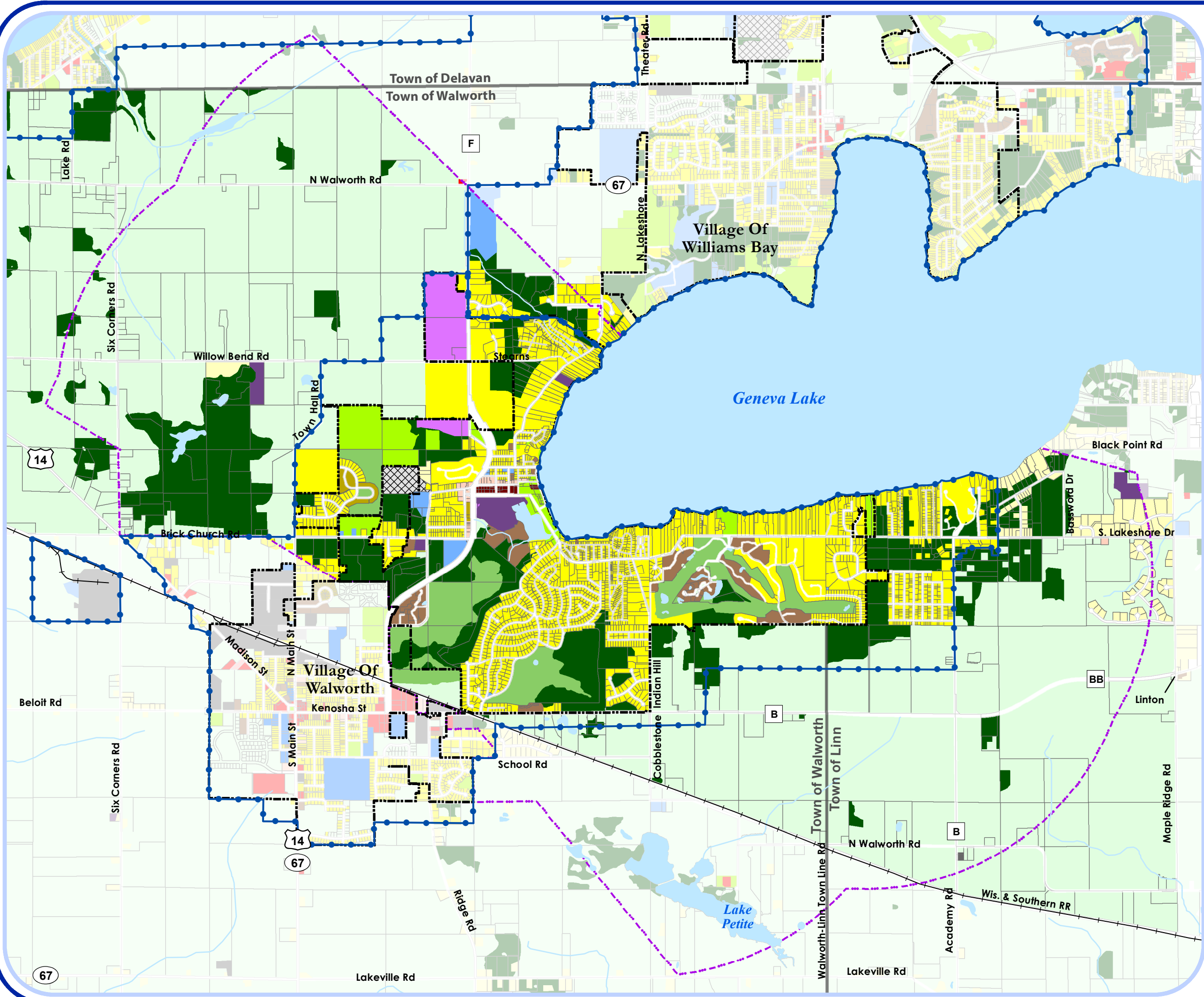
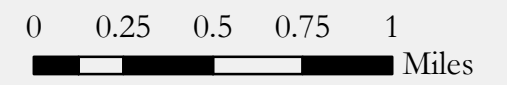


Fontana Comprehensive Plan

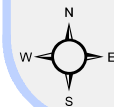


- Municipal Boundary
- Town Boundary
- Extra Territorial Jurisdiction
- Urban Service Boundary
- Road/Rail Right of Way
- Railroad

- Future Land Use Categories**
- Agricultural/Vacant
 - Single-Family Residential (Septic)
 - Single-Family Residential (Sewered)
 - Two-Family/Townhouse Residential
 - Mixed Residential
 - Neighborhood Commercial
 - Central Mixed Use
 - Planned Mixed Use
 - General Commercial
 - General Industrial
 - Community Facility
 - Special Use
 - Public Park & Recreation
 - Private Park & Recreation
 - Woodland & Open Space
 - Mineral Extraction
 - Surface Water



Source: Walworth County LIO, V&A
 Adopted: November 9, 2009
 Amended: August 6, 2018



VANDEWALLE & ASSOCIATES INC.
 Shaping places, shaping change