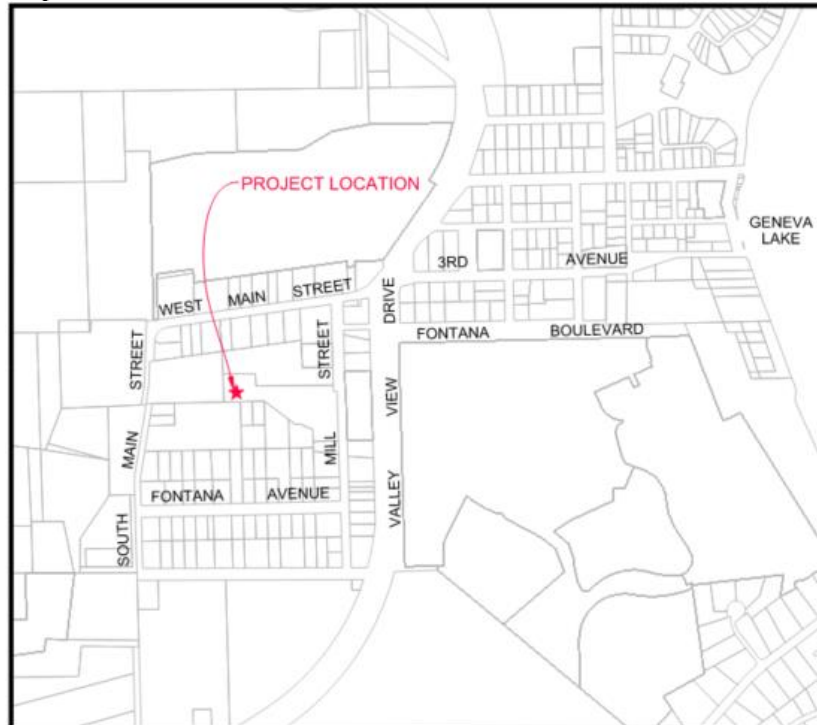


NOTICE OF PUBLIC WORKS PROJECT

**Hildebrand Nature Conservancy Berm Removal & Grading**

**Project Description:** Grading project to restore the floodplain along a section of Van Slyke Creek in the Hildebrand Nature Conservancy. Reestablishing the floodplain will reduce stream velocities during large storm events that are causing severe erosion along the creek near the east pedestrian bridge. A section of a manmade berm along the creek will be removed and the material respread in upland areas of the conservancy. Project will require some tree removals for access and the in the berm removal area, and all disturbed areas will be restored with a native vegetation seed mix. The trail will remain open during construction.

Project location is depicted below:



**Anticipated Construction Schedule:** Work anticipated to start week of October 9<sup>th</sup> and be complete by early November.

**Typical Working Hours:** 7:00 am to 6:00 pm, Monday – Saturday.

Feel free to contact Village Hall with any questions regarding this project.